

# Luma Town Hall

August 5, 2020

---



# Welcome!

**THANK YOU** for joining our virtual Luma Town Hall!

## ABOUT THE WEBINAR:

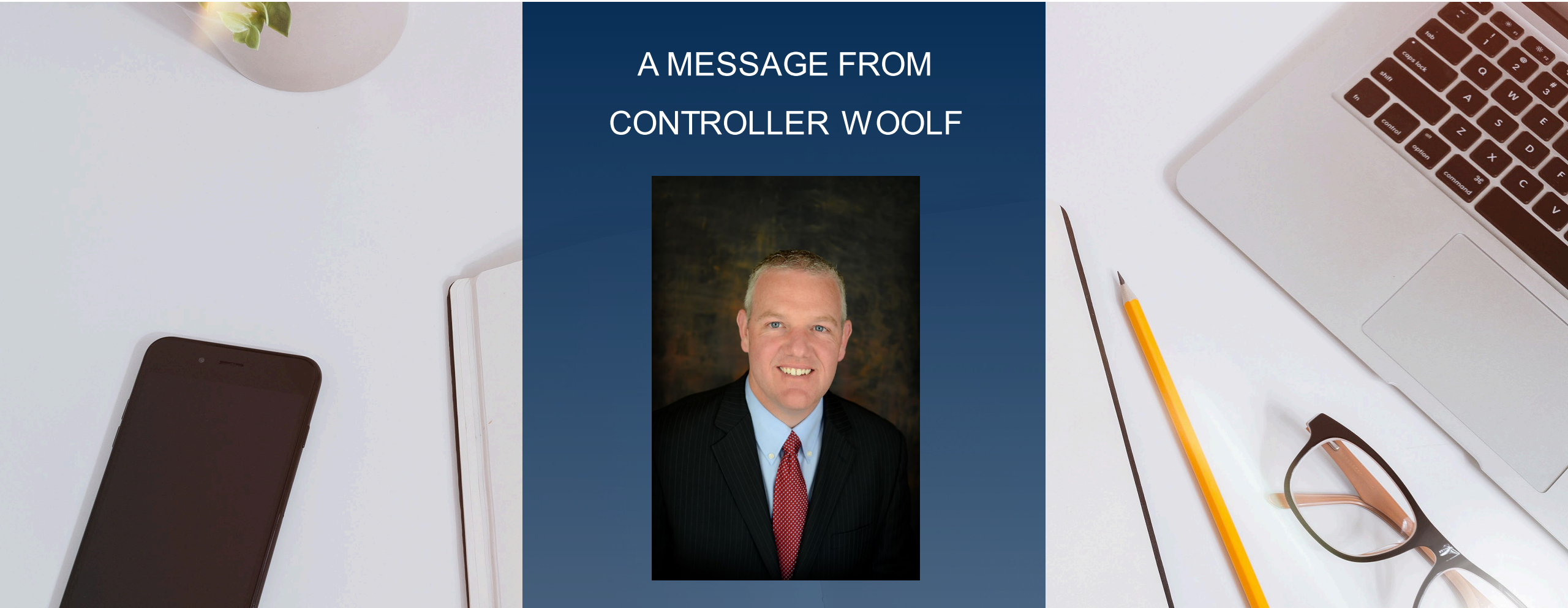
- This meeting is being recorded and will be available at [luma.sco.idaho.gov](http://luma.sco.idaho.gov)
- All attendees are muted, please utilize the Q&A functionality to ask questions.
- You will see a chat icon, but the chat functionality has been disabled.



# Welcome!

**THANK YOU** for joining our virtual Luma Town Hall!

A MESSAGE FROM  
CONTROLLER WOOLF



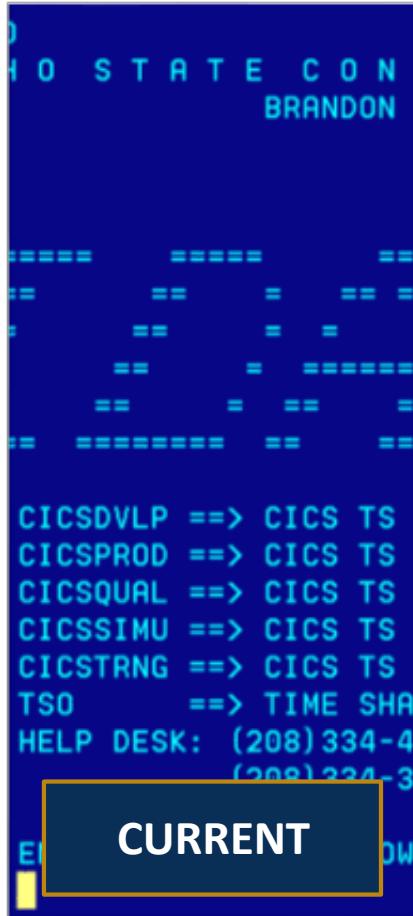
# Welcome!

**THANK YOU** for joining our virtual Luma Town Hall!

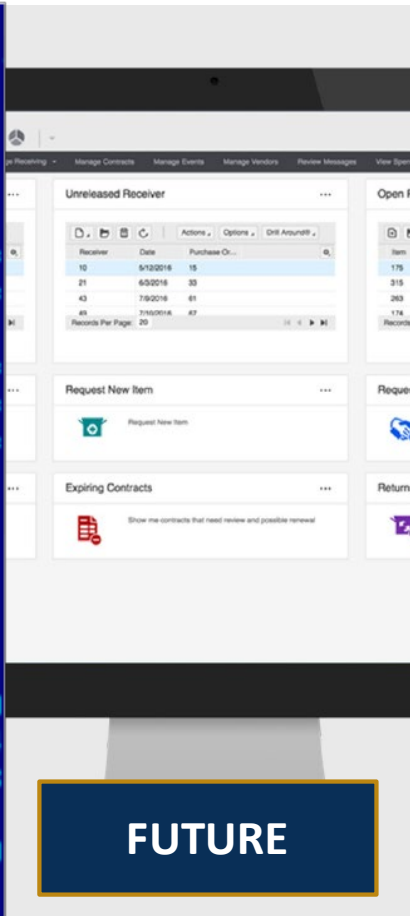
## AGENDA:

- What is Luma
- Luma Implementation Timeline
- About Luma Software
- Finance Demo
- Procurement Demo
- Budget Demo

# What is Luma?



**CURRENT**



**FUTURE**



**BENEFITS**

Luma is Idaho's statewide, cloud-based enterprise resource planning (ERP) system, that will support budget development, financial management, procurement, payroll, and human capital management functions.

# What is Luma?

```
00
I HO STATE CONTROLLER'S COMPUTER N
BRANDON D WOOLF, STATE CONTROLLER

=====
==          ==          ==          ==          ==          ==
==          ==          ==          ==          ==          ==
==          ==          ==          ==          ==          ==
==          ==          ==          ==          ==          ==
==          ==          ==          ==          ==          ==
=====

CICSDVLP ==> CICS TS 3.2  DEVELOPMENT
CICSPROD ==> CICS TS 3.2  PRODUCTION
CICSQUAL ==> CICS TS 3.2  QUALITY ASSURANCE
CICSSIMU ==> CICS TS 3.2  SIMULATION
CICSTRNG ==> CICS TS 3.2  TRAINING
TSO      ==> TIME SHARING OPTION
HELP DESK: (208) 334-4808          M-F 8A-5P MOUNTAIN
           (208) 334-3155 OR 334-2450 NIGHTS AND WEEKENDS

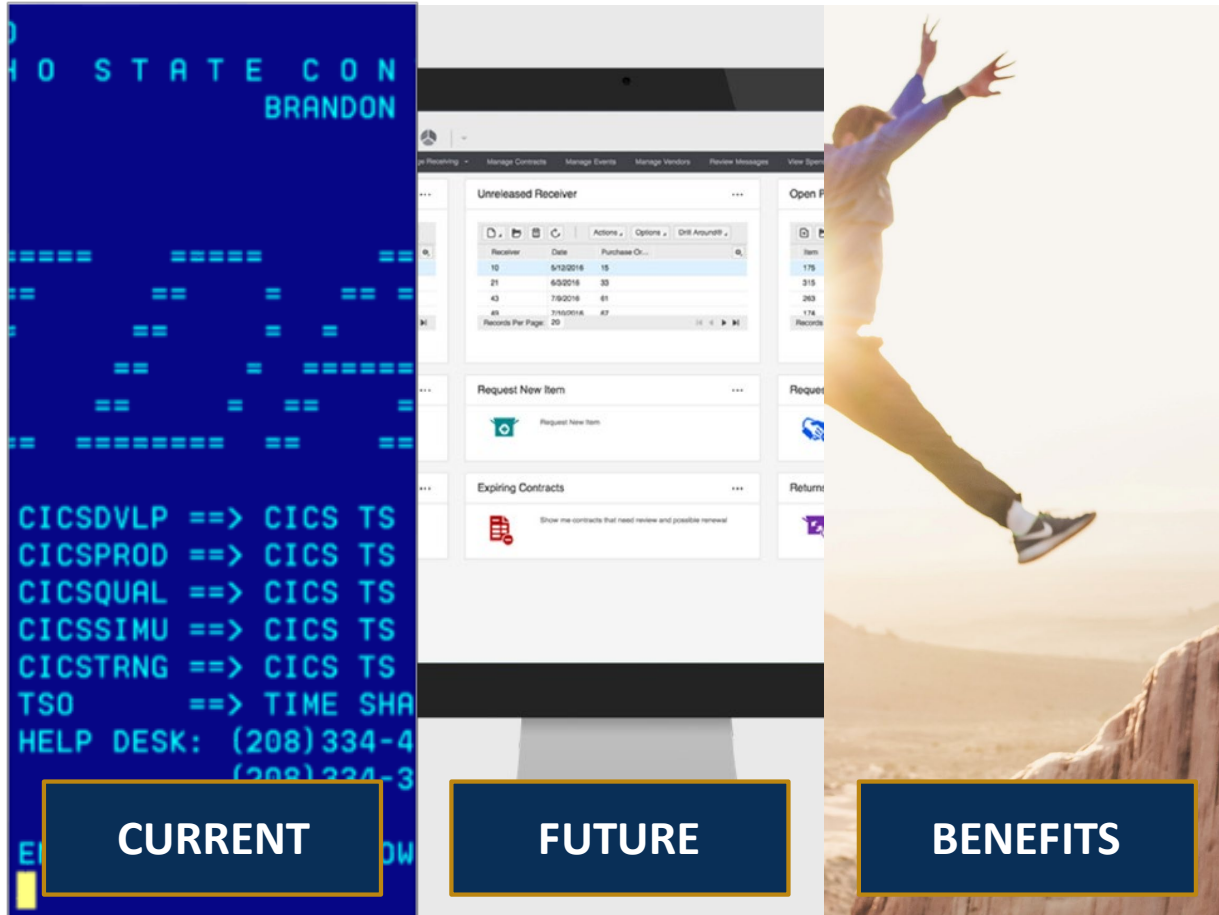
ENTER SELECTION BELOW.
```

## Legacy Systems and Applications:

- STARS
- EIS
- IPRO
- IPERFORM
- ITIME
- BDS
- IPOPS
- IBIS
- Statewide Accounting System Applications

**CURRENT**

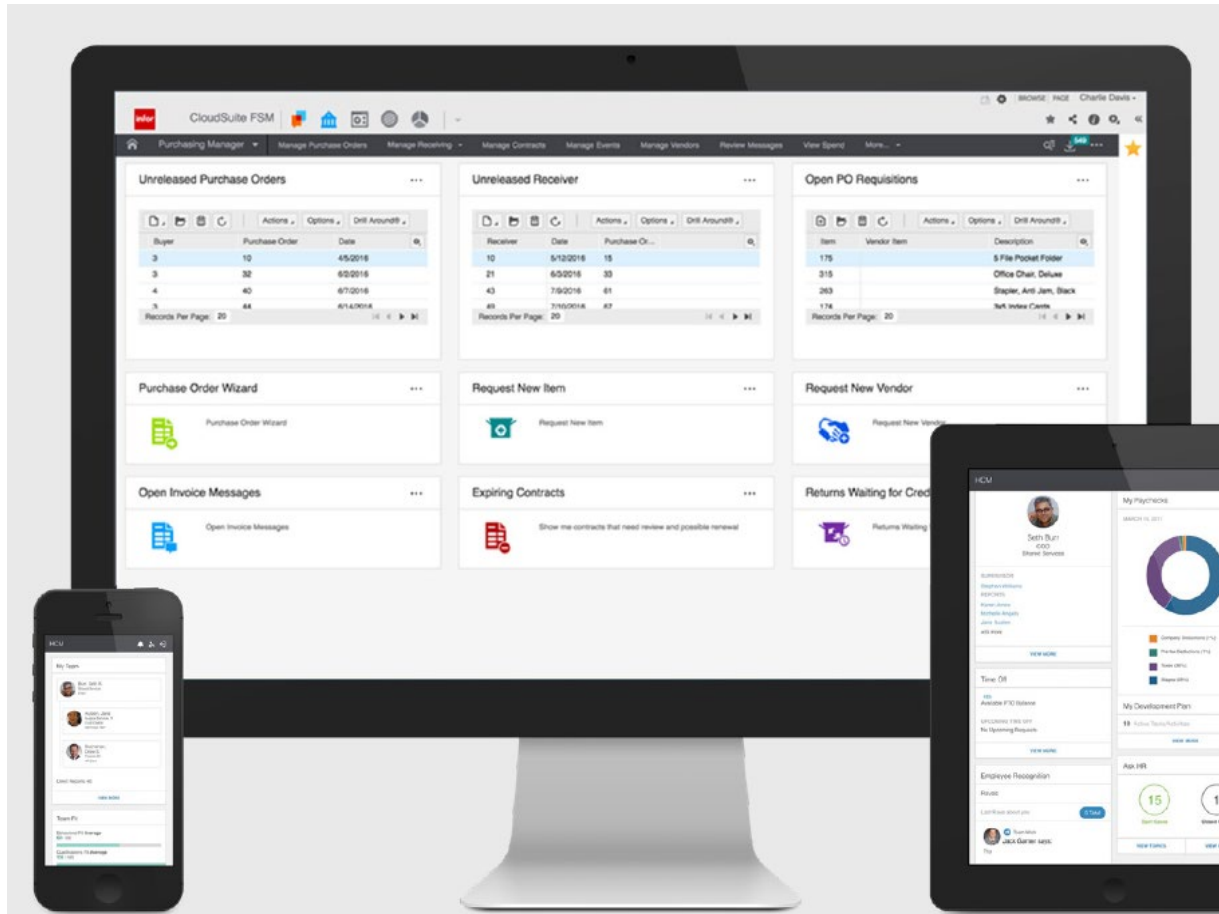
# What is Luma?



Some risks of the current systems are:

- Impending legacy systems failures due to software end of life.
- Inability to modify existing software due to incompatibility with modern hardware.
- Inaccurate and mismatched data.
- Loss of expertise in legacy systems.

# What is Luma?



A modern, cloud ERP is a software suite used to manage day-to-day business activities. ERP systems tie together and define a plethora of business processes and enable the flow of data between them, from a requisition to cutting a check, and hire to retire!

**FUTURE**



# What is Luma?



- Access to Luma from almost anywhere.
- All agencies will speak the same “language,” making it easy to share information.
- Fewer repetitive tasks with smart software automation.
- Easy reporting with more options to compare data.
- Dynamic systems that improve over time as technology updates instead of becoming dated.

## BENEFITS

# Luma Project Vision and Goals

## Vision:

Acquire, implement, and sustain a statewide enterprise system that modernizes and transforms the way the State of Idaho does business, improves transparency, and provides a core foundation for the future.

## Goals:

1

**An ERP solution** that all agencies will use for budget planning, financial management, procurement, payroll, and human capital management.

2

**Improve productivity** and reduce costs by eliminating redundant systems and unnecessary complexity required to perform operational and administrative services.

3

**Modernize and standardize** business processes for alignment with industry best practices inherent in COTS software for efficient workflow and accurate information reporting.

4

**Increase transparency** of government operations and expenses.

5

**Reduce risk exposure** associated with the current outdated software systems.

6

**Improve decision making** by capturing and being able to report consistent expandable sets of data.

7

Ensure strength and efficiency of the State's **Data security management**.

# Luma Implementation Timeline



Historical Events



Current Events



Upcoming Events

# Luma Implementation Timeline



## Historical Events



## Current Events



## Upcoming Events

September 2019



Phase 1 implementation kick-off, project team onboarding, and software configuration training.

November 2019



Business Process Redesign and the creation of Luma business process maps

March 2020



Chart of accounts redesign and preparation for agency chart of account build.

June 2020



Persona and user story creation. Sprint 1 configuration and process testing.

# Luma Implementation Timeline



Historical Events



Current Events



Upcoming Events

# Luma Implementation Timeline



Historical Events



Current Events



Upcoming Events

July 2020



Sprint 2 configuration and process testing. Agency functional and technical specifications for data conversion and interfaces.

August 2020



Sprint 3 configuration and process testing. Data conversion and interfaces. Script preparation for System Integration Testing (SIT)

October 2020



SIT 1, which is end to end process design testing, data conversion testing, and interface testing.

October 2020



Training needs assessment and planning for end user training material development.

# Luma Implementation Timeline



Historical Events



Current Events



Upcoming Events

# Luma Implementation Timeline



## Historical Events



## Current Events



## Upcoming Events

January 2021



SIT 2, end to end process design testing, data conversion testing, forms and reports testing, interface testing. Design updates.

March 2021



User Acceptant Testing, “dress rehearsal” testing with agencies. Continue training materials development.

May 2021



End user training and budget module Go-Live.

July 2021

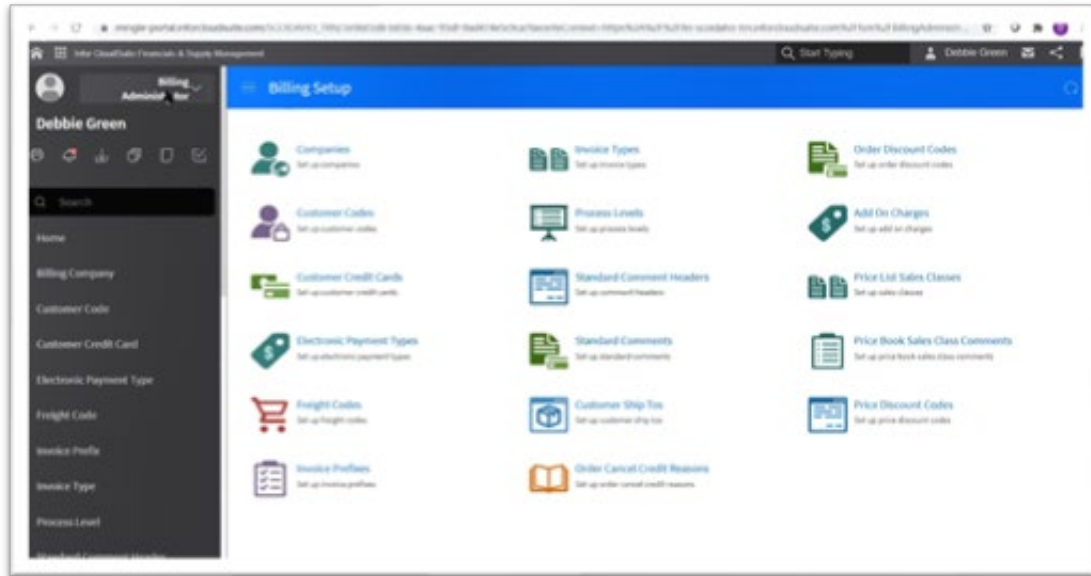


Phase 1 Go-Live. Phase 2 implementation kick-off, project team onboarding, and software configuration training.

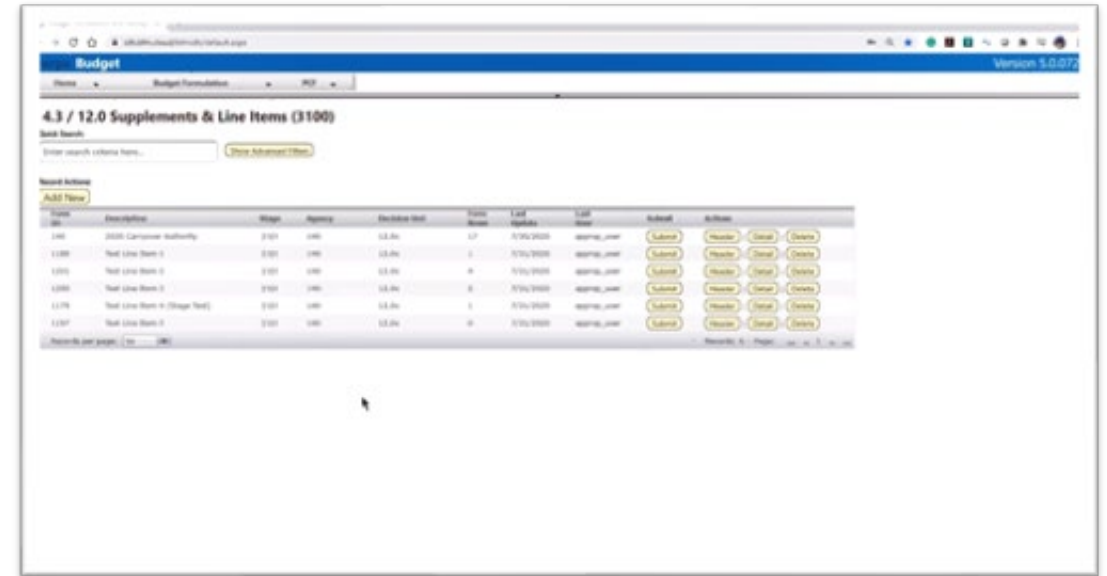


# About Luma Software

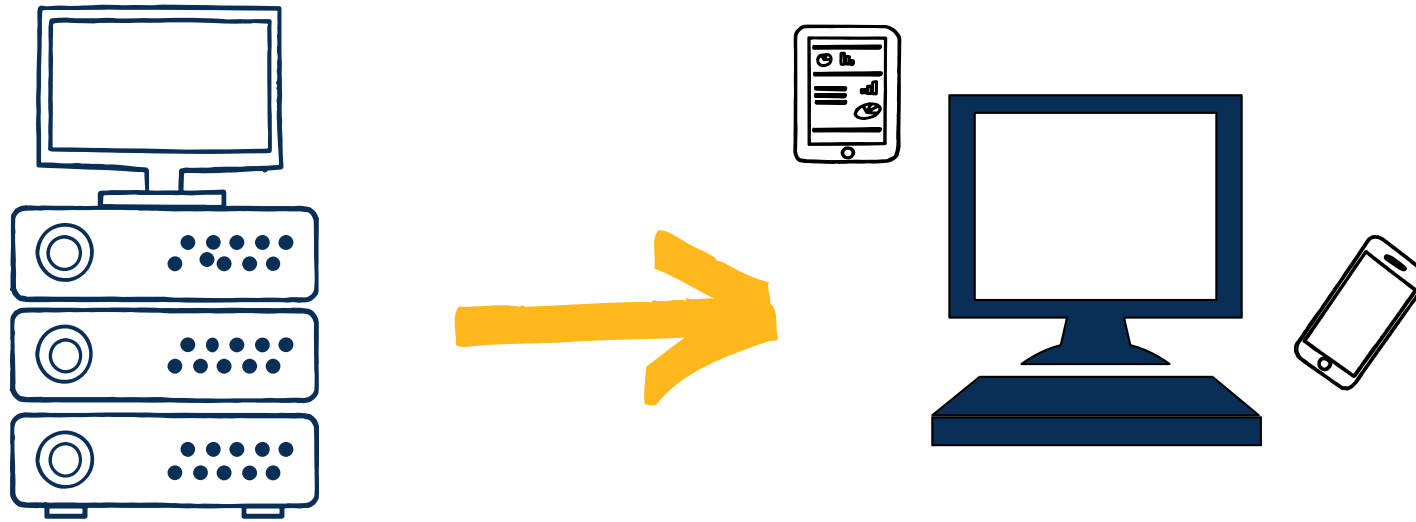
Luma Finance and Procurement are powered by Infor CloudSuite Public Sector. Infor partnered with Sherpa to offer a budget development module robust enough to meet the State's requirements. You will notice in the following demonstrations that Sherpa has a different look and feel from Infor Finance and Procurement. Sherpa will be a fully integrated part of the Luma system.



Infor



Sherpa



# Luma Financial Module Demonstration

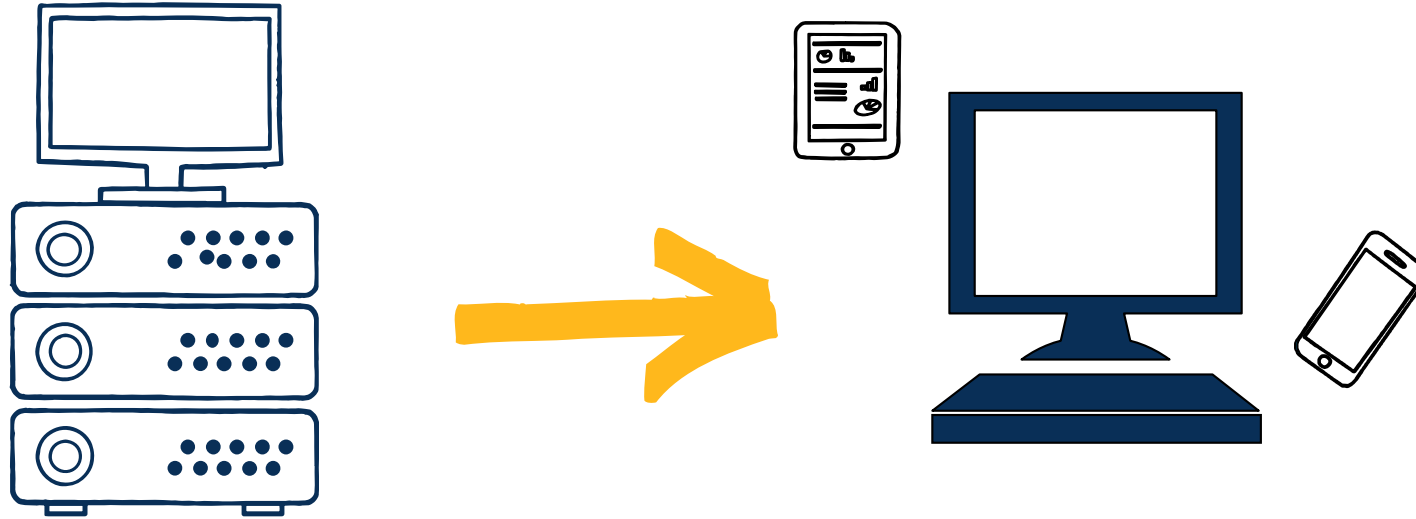
---

INFOR OVERVIEW, ACCOUNTS PAYABLE, AND EXPENSE MANAGEMENT



# Questions on the Finance Demo

---



# Luma Procurement Module Demonstration

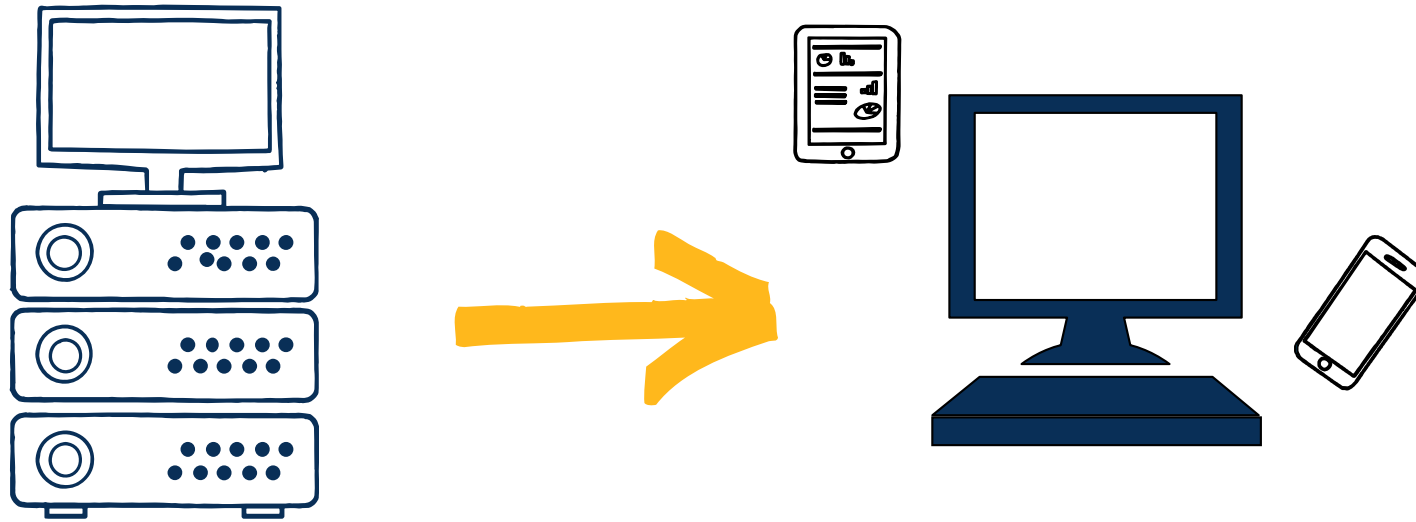
---

REQUISITION SELF-SERVICE AND PURCHASE ORDERS



# Questions on the Procurement Demo

---



# Luma Budget Module Demonstration

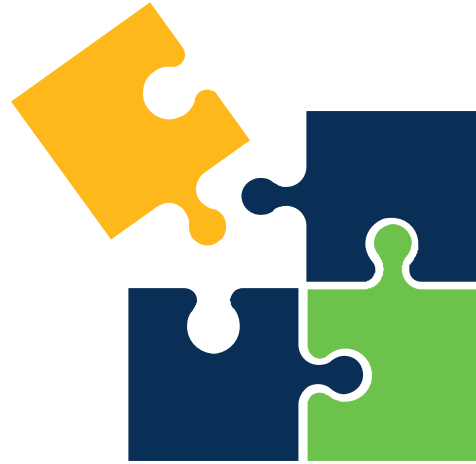
---

LINE ITEM BUDGET REQUEST FORM



# Questions on the Budget Demo

---



# Question & Answer Session

---

THANK YOU FOR ATTENDING OUR LUMA TOWN HALL!

[luma@sco.idaho.gov](mailto:luma@sco.idaho.gov)